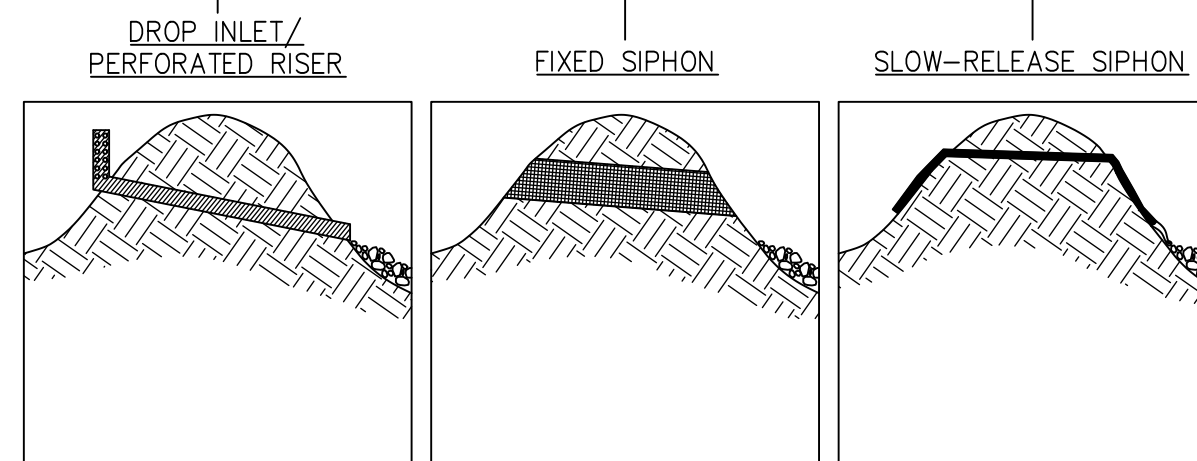
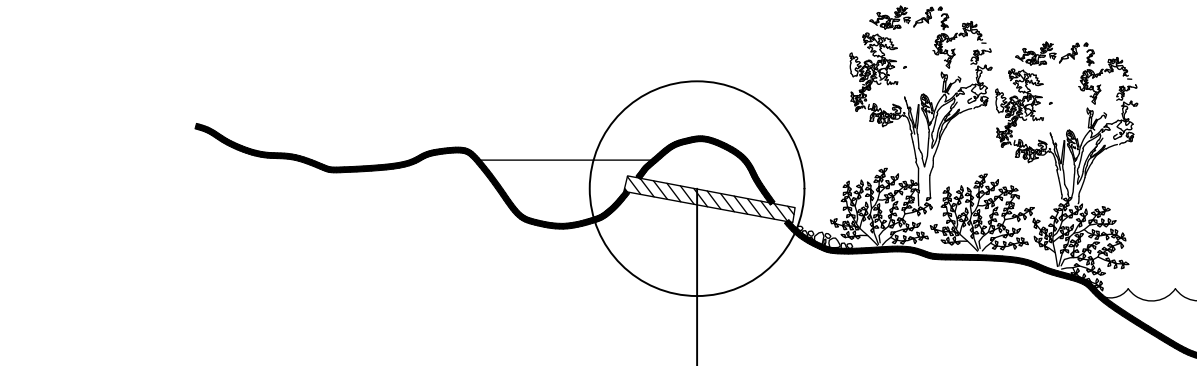
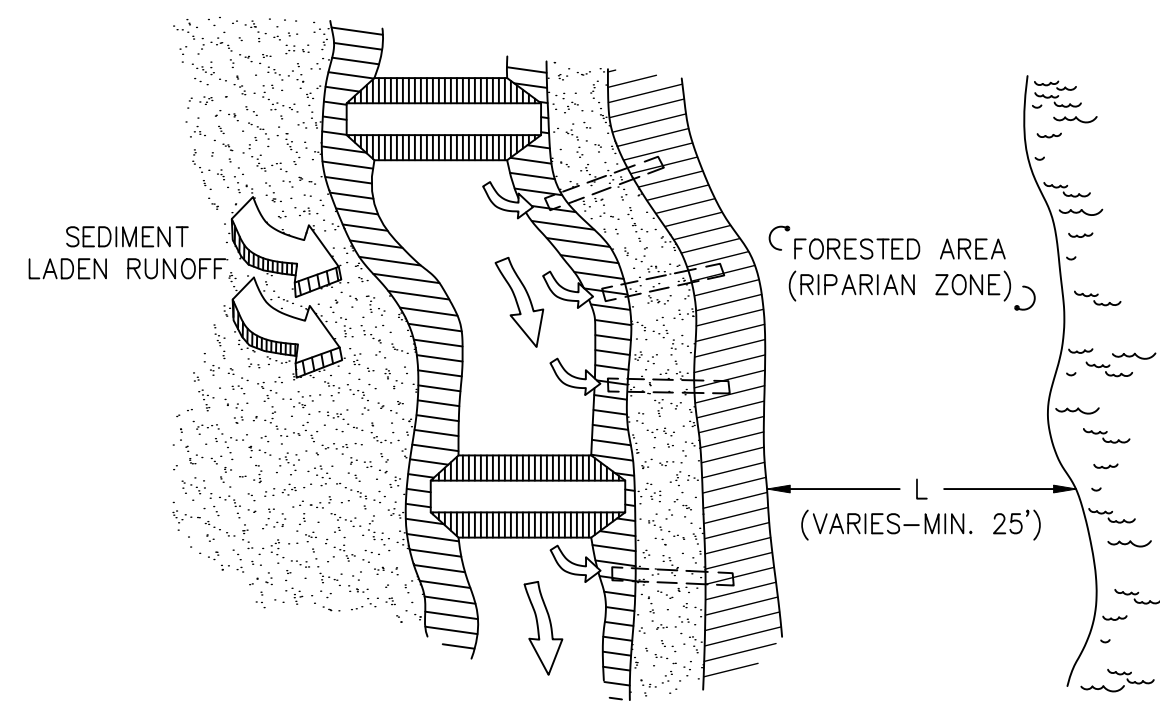


# INTEGRATED SEEP BERM EROSION CONTROL SYSTEM

SpB

## SEEP BERM PLAN AND CROSS-SECTION

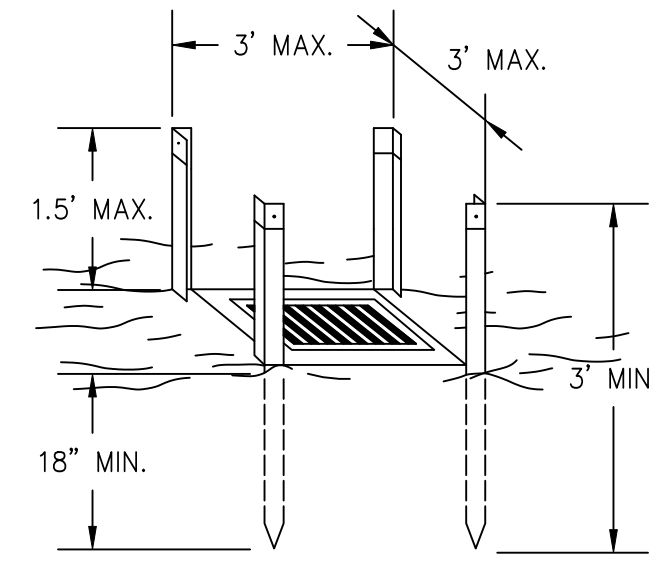


\*DESIGNER/ENGINEER MUST DEFINE IF SEEP BERM IS TO BE A TEMPORARY OR PERMANENT BMP.

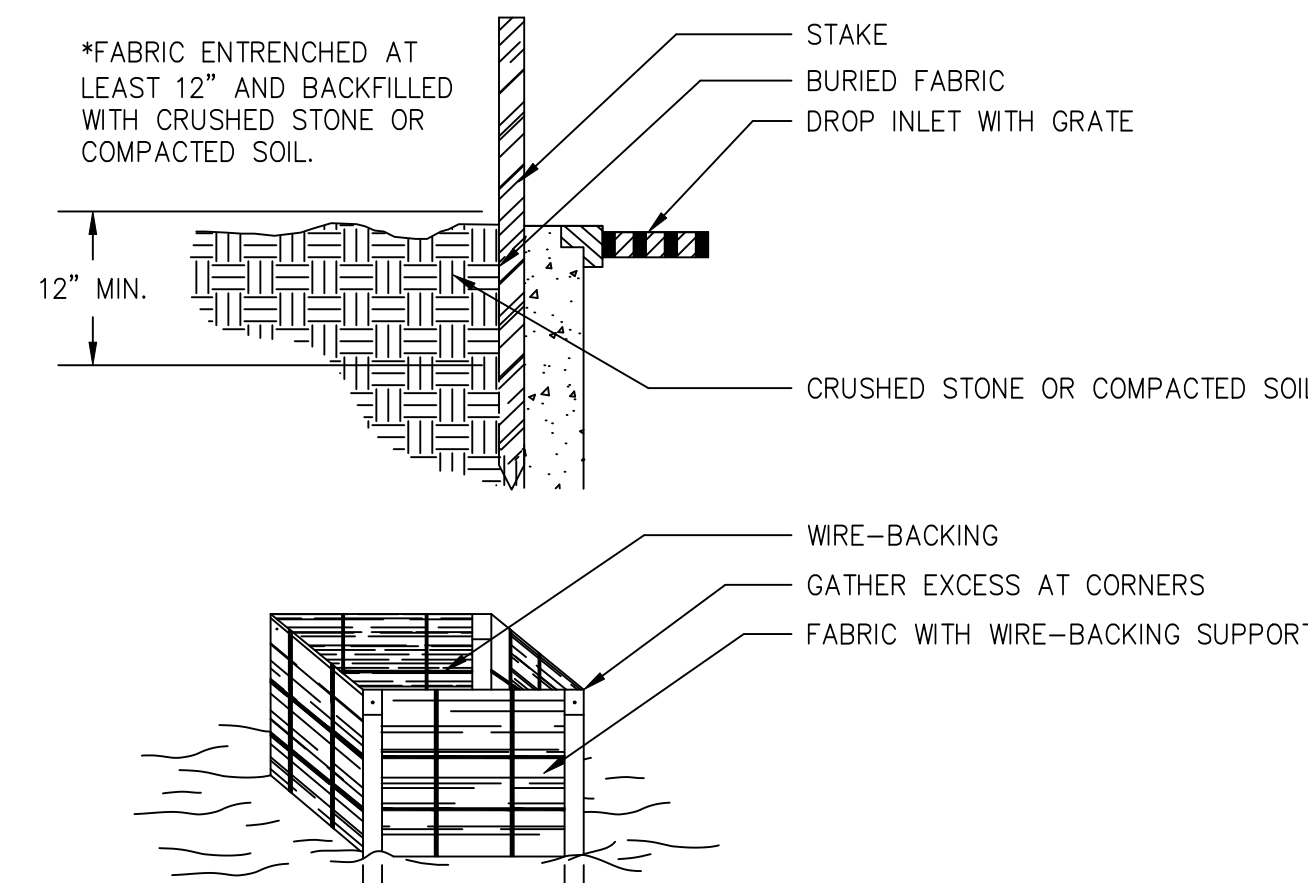
# FABRIC AND SUPPORTING FRAME FOR INLET PROTECTION

Sd2-F

## STEEL FRAME AND SILT FENCE INSTALLATION



- NOTES:
- DESIGN IS FOR SLOPES NO GREATER THAN 5% (NOT DESIGNED FOR CONCENTRATED FLOWS).
  - THE STEEL POSTS SUPPORTING THE SILT FENCE MATERIAL SHOULD BE SPACED EVENLY AROUND THE PERIMETER OF THE INLET (MAXIMUM OF 3' APART).
  - THE STEEL POSTS SHOULD BE SECURELY DRIVEN AT LEAST 18" DEEP.
  - THE FABRIC SHOULD BE ENTRENCHED AT LEAST 12" AND THEN BACKFILLED WITH CRUSHED STONE OR COMPACTED SOIL.



# TEMPORARY SEDIMENT TRAP

COURTESY OF CITY OF KNOXVILLE BMP EROSION AND SEDIMENT ROCK OUTLET

Sd4-C

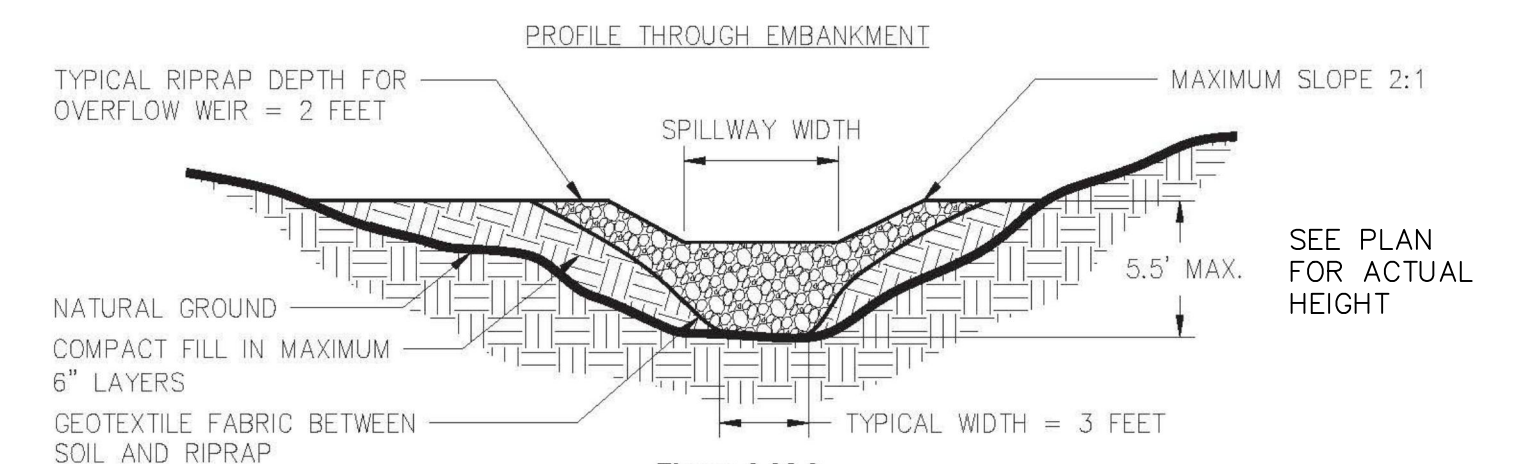
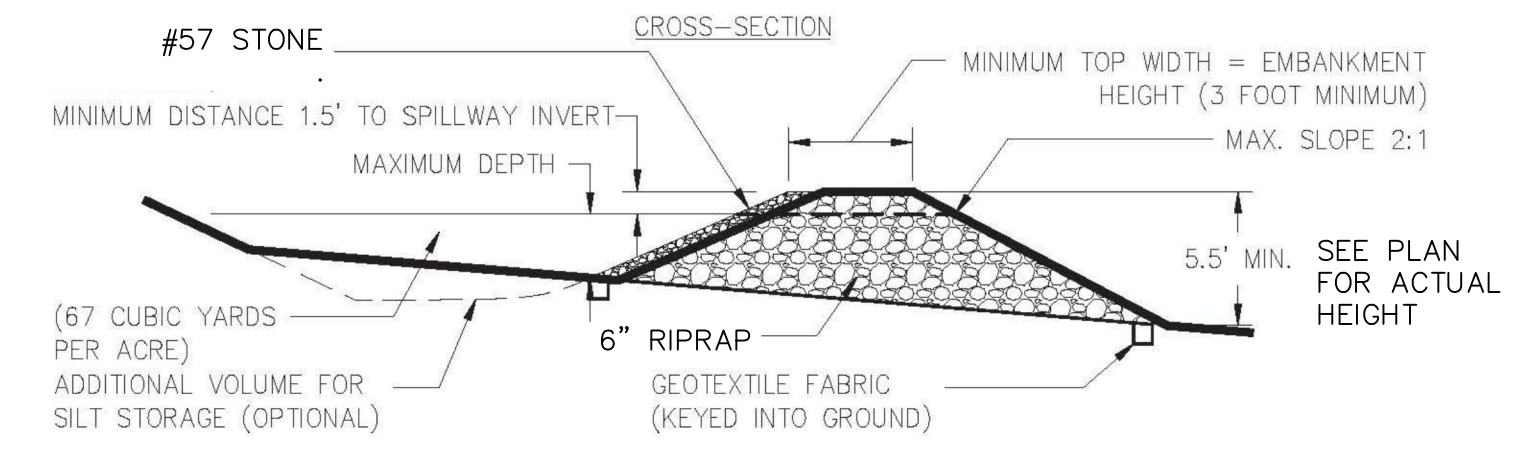
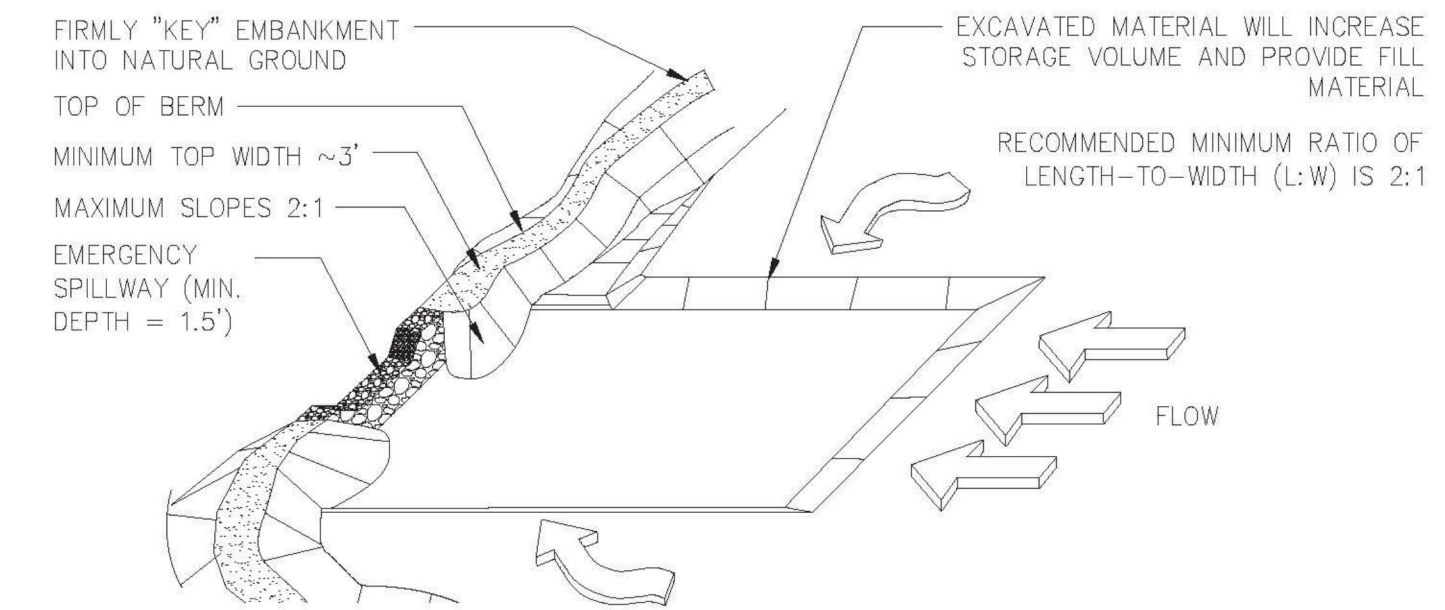


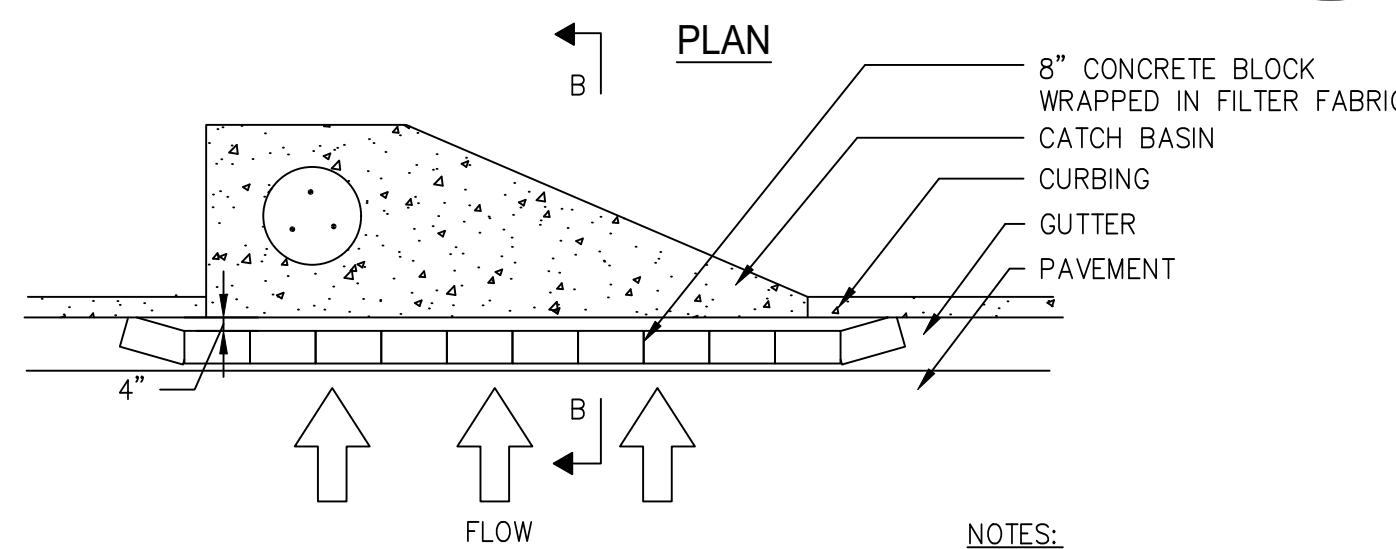
Figure 6-30.3

6-241

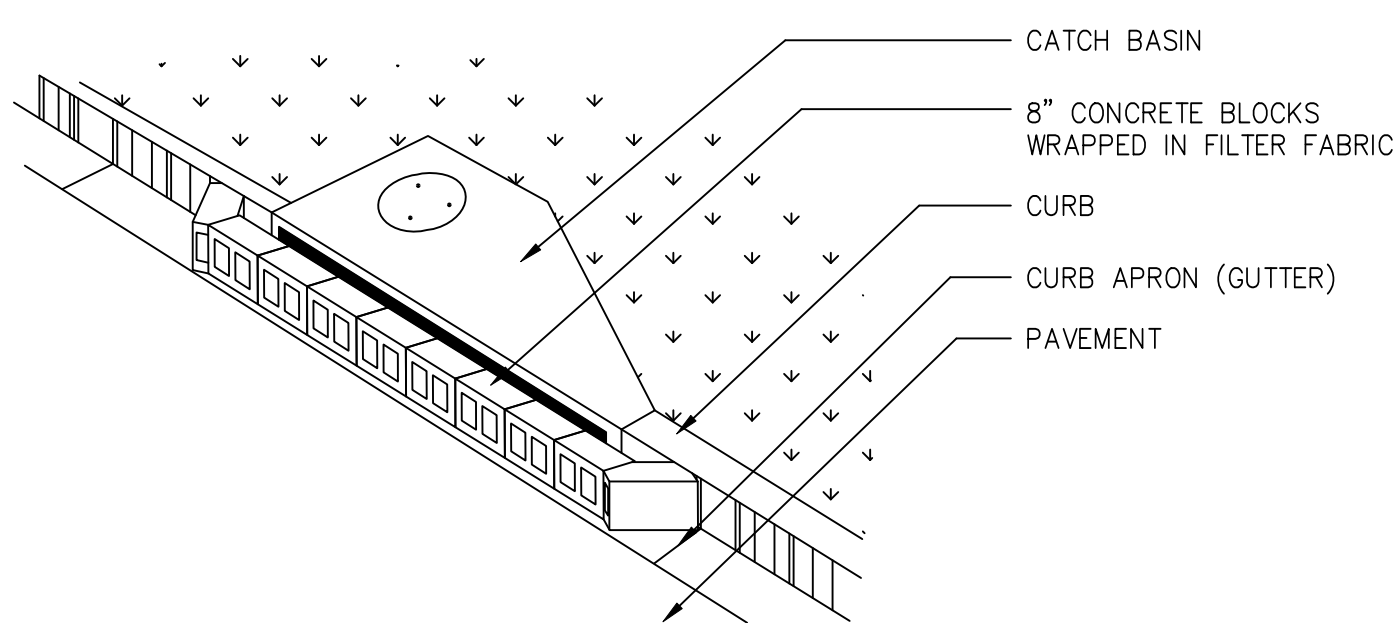
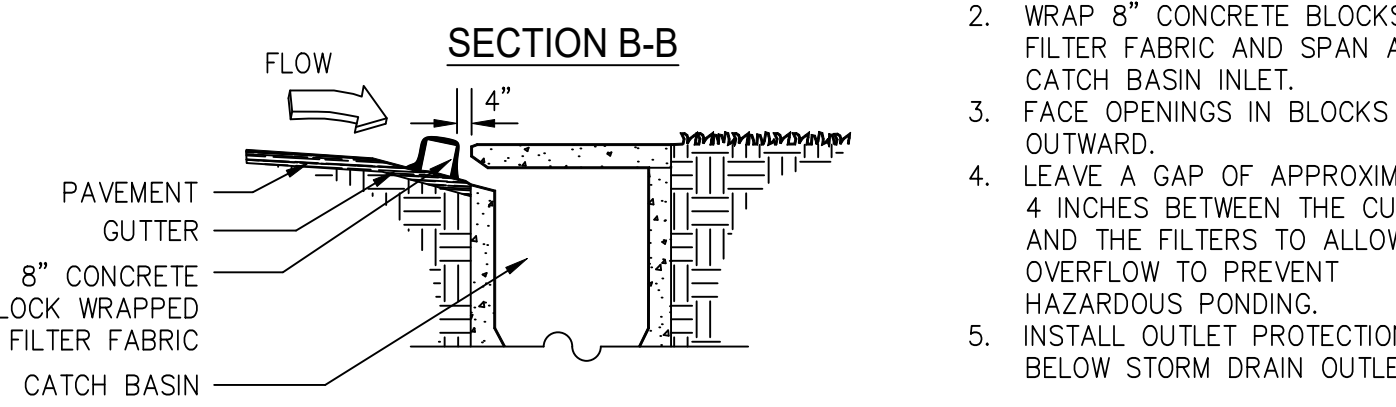
GSWCC (Amended - 2013)

# CURB INLET FILTER "PIGS IN BLANKET"

Sd2-P



- NOTES:
- INSTALL FILTER AFTER ANY ASPHALT PAVEMENT INSTALLATION.
  - WRAP 8" CONCRETE BLOCKS IN FILTER FABRIC AND SPAN ACROSS CATCH BASIN INLET.
  - FACE OPENINGS IN BLOCKS OUTWARD.
  - LEAVE A GAP OF APPROXIMATELY 4 INCHES BETWEEN THE CURB AND THE FILTERS TO ALLOW FOR OVERFLOW TO PREVENT HAZARDOUS PONDING.
  - INSTALL OUTLET PROTECTION BELOW STORM DRAIN OUTLETS.



## GEOTEXTILE FABRICS

STONE/SOIL INTERFACE  
CONTECH FILTER FABRIC  
(OR APPROVED EQUAL  
PER GDOT QUALIFIED PRODUCT LIST #28)

CONTECH C70/06 FOR WOVEN FABRIC  
CONTECH C45NW FOR NON-WOVEN FABRIC

TURF REINFORCEMENT MAT  
PROPEX TRM  
(OR APPROVED EQUAL  
PER GDOT QUALIFIED PRODUCT LIST #49)

LANDLOK 450 FOR DITCH FLOWS UP TO 18fps AND SLOPES 3:1 AND FLATTER

PYRAMAT 75 FOR DITCH FLOWS UP TO 25fps AND SLOPES GREATER THAN 3:1

**RAE**  
RICHARDS & ASSOCIATES ENGINEERING, INC.  
CIVIL ENGINEERING + LAND PLANNING  
P.O. BOX 220 CHATSWORTH, GA 30705  
(706) 616-9906

GA PROFESSIONAL ENGINEER NO. 26730  
LEVEL II CERTIFIED DESIGN PROFESSIONAL NO. 8688

PROJECT  
CORE DALTON 4  
ENTERPRISE DRIVE  
DALTON, GA  
CLIENT  
CORE SCIENTIFIC, INC.  
838 WALKER ROAD, SUITE 21-2105  
DOVER, DE 19904

© RICHARDS & ASSOC. ENGINEERING, INC.

UNLESS THIS DRAWING IS STAMPED, SIGNED AND DATED BY THE DESIGN PROFESSIONAL, THIS DRAWING IS UNAPPROVED AND SHOULD NOT BE USED FOR CONSTRUCTION. RICHARDS & ASSOCIATES ENGINEERING, INC. IS NOT LIABLE FOR ANY MISTAKE OR OMISSION CONTAINED IN THIS DRAWING.

THIS DRAWING AND DESIGN ARE THE PROPERTY OF RICHARDS & ASSOCIATES ENGINEERING, INC. AND ARE NOT TO BE REPRODUCED OR COPIED IN ANY MANNER WITHOUT THE WRITTEN CONSENT OF RICHARDS & ASSOCIATES ENGINEERING, INC. ALL COMMON LAW RIGHTS OF COPYRIGHT AND OTHERWISE ARE HEREBY SPECIFICALLY RESERVED.

THIS DRAWING SHEET MAY BE PART OF A COMPLETE SET OF DESIGN DRAWINGS AND SHOULD NOT BE SEPARATED FROM THE SET. INFORMATION PERTAINING TO THIS SHEET MAY BE FOUND ON OTHER SHEETS IN THE SET.

IF ANY CONTRACTS, SPECIFICATIONS, OR OTHER INSTRUMENTAL CONDITIONS ARE CONSIDERED, EITHER ON THE CONSTRUCTION DOCUMENTS OR THE FIELD CONDITIONS, THE CONTRACTOR MUST NOTIFY THE ENGINEER IMMEDIATELY AND SHALL NOT COMMENCE OPERATIONS UNTIL THE CONTRACTOR, DISCREPANCIES, OR OTHER UNSATISFACTORY CONDITIONS ARE RESOLVED.

THESE PLANS CANNOT BE USED FOR CONSTRUCTION UNLESS THEY HAVE BEEN APPROVED, REVISIONS AND SEALS BY THE APPROPRIATE AUTHORITIES AND ALL NECESSARY PERMITS HAVE BEEN OBTAINED BY THE OWNER. THE OWNER IS RESPONSIBLE FOR PROCURING ALL NECESSARY PERMITS.

Revisions	Date

Drawing Title  
**SOIL EROSION  
SEDIMENTATION  
AND POLLUTION  
CONTROL  
DETAILS**

RELEASE SCHEDULE	
INITIAL SUBMITTAL	3/24/25
COUNTY COMMENTS	4/4/25
EARLY RELEASE	5/2/25
ISSUED FOR PERMIT	5/16/25

DATE	5/16/25	DRAWING NO.
PROJECT NO.	24-036	C5.2